



10/100/1000Base-T to 1000Base-FX with LFP Fiber



Optic Media Converter

OP-ECxx3xxx-xx-LFP



Shenzhen Optostar Optoelectronics Co., Ltd

2013. 5 (Version 2)

Item	Fiber Media Converter
Model No.	OP-ECxx3xxx-xx-LFP
Description	10/100/1000Base-T to 1000Base-FX with LFP USB Powered
 <p>Front</p>	 <p>Back</p>

Overview

OP-ECxx3xxx-xx-LFP 10/100/1000M Fiber Media Converter translates the signal from a twist-pair 10/100/1000Base-T cable to 1000Base-FX fiber optic cable, extends data transmission distance from 100m via copper cables to 120km by fiber optic cable, which supports LFP (Link Fault Pass-through) function & USB Powered.

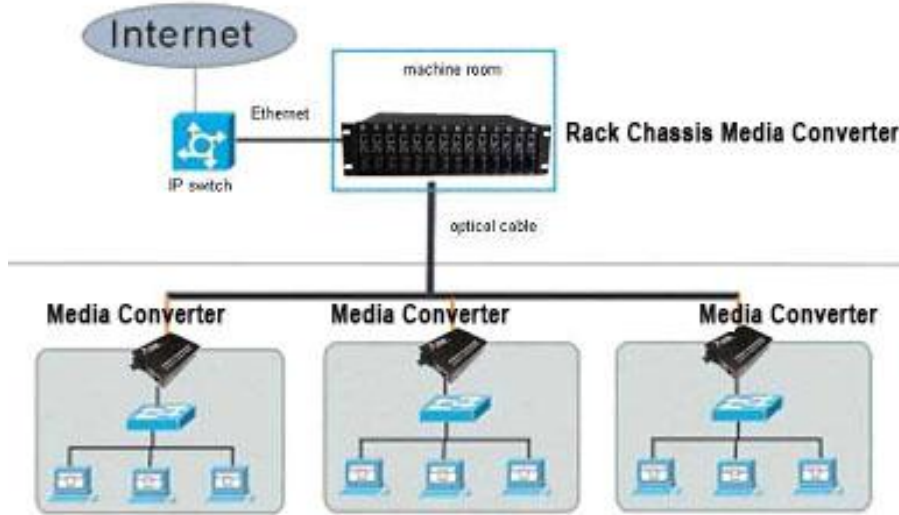
Features

- 10/100/1000Mbps auto-sensed, easily upgrade
- Full-duplex and half-duplex auto-sensed
- MDI/MDI-X Auto Negotiation
- 10/100/1000Mbps store-and-forward
- 1000Mbps cut-through transmission
- Supporting VLAN / VoIP /QoS packets
- Support flow control and reduce broadcast packets
- Supporting STP to form a redundant network
- Extremely low power consumption, low heat, stable performance
- Providing Desktop, Wall-mounted, Chassis, DIN-rail installation
- **LFP (Link Fault Pass-through) Function**
- External Power Adapter or USB power source
- **DIP Switch to set configurations**
- Supporting extra-long packets up to 1600 bytes

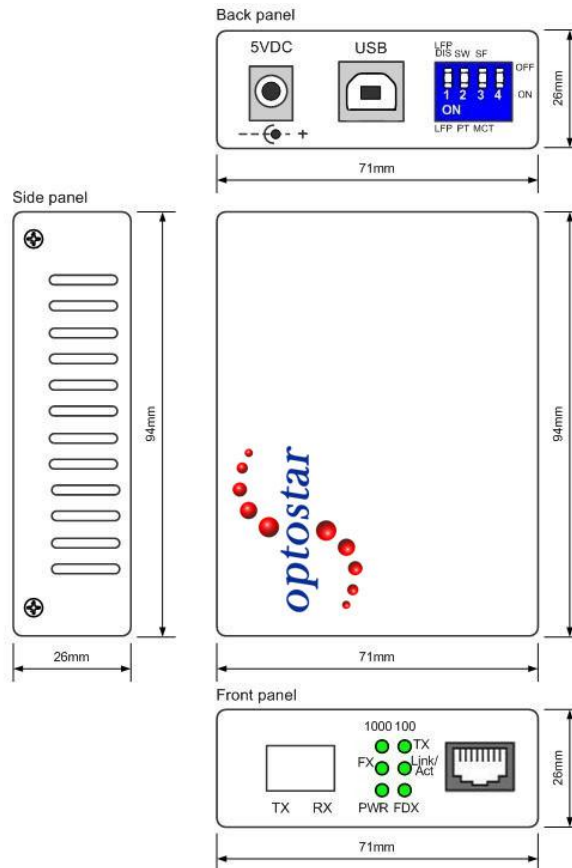
Application

1. Network Communication
2. FTTH / FTTB / FTTx
3. ISP Backhaul Networking

media converter solution



Mechanical Dimensions



Technical Indexes

Standard	IEEE 802.3, IEEE 802.3u, IEEE 802.3ab, IEEE 802.3z
Data Rate	Copper: 10/100/1000M; Fiber: 1.25G
Flow control	Full duplex: flow control; Half duplex: back pressure
Copper Port	No.s of Copper Port: 1 Connector: RJ45 Connector Distance:100m
Fiber Port	No.s of Fiber Port: 1 Connector: SC as default, FC/ST optional Wavelength: MMF 850nm, SMF: 1310nm, Bi-di 1310/1550nm Distance: MMF 550Km, SMF 20/40/80/100/120Km, Bi-di 20/40/80/100Km
LED indicators	PWR (power supply); FL/A (optical link/action) FDX (FX full duplex), TL/A (twisted pairs link/action) 100 (100M transmission rate of twisted pairs), 1000 (100M transmission rate of twisted pairs)
Power supply	Working power: DC5V 1A AC Power Supply: 100V~ AC240V to 5V1A Or DC Power Supply: -36~-72V to 5V1A External / Internal Power Supply Optional
Power consumption	<3W
Environment	Operating temperature : -10~55°C Storage Temperature: -40~85°C Relative Humidity: 5% to 95% non-condensing
Dimensions	External: 94mmx70mm*26mm Internal: 140mmx110mmx30mm
Gross Weight	External : 0.4kg Internal: 0.5kg

Order Information

Model No.	Data Rate	Fiber Mode	Wavelength	Fiber Connector	Distance	Power Supply
OP-ECM13111-2-LFP	10/100/1000M	MMF	850nm	SC	550m	Ex.AC220V
OP-EC13211-20-LFP	10/100/1000M	SMF	1310nm	SC	20km	Ex.AC220V
OP-ECS13211-40-LFP	10/100/1000M	SMF	1310nm	SC	40km	Ex.AC220V
OP-ECS13511-20-LFP	10/100/1000M	Bi-di	TX1310/RX1550nm	SC	20km	Ex.AC220V
OP-ECS13711-20-LFP	10/100/1000M	Bi-di	TX1550/RX1310nm	SC	20km	Ex.AC220V
OP-ECS13511-40-LFP	10/100/1000M	Bi-di	TX1310/RX1550nm	SC	40km	Ex.AC220V
OP-ECS13711-40-LFP	10/100/1000M	Bi-di	TX1550/RX1310nm	SC	40km	Ex.AC220V
OP-ECM33111-2-LFP	10/100/1000M	MMF	850nm	SC	550m	Ex.DC48V
OP-ECS33211-20-LFP	10/100/1000M	SMF	1310nm	SC	20km	Ex.DC48V
OP-ECS33211-40-LFP	10/100/1000M	SMF	1310nm	SC	40km	Ex.DC48V
OP-ECS33511-20-LFP	10/100/1000M	Bi-di	TX1310/RX1550nm	SC	20km	Ex.DC48V
OP-ECS33711-20-LFP	10/100/1000M	Bi-di	TX1550/RX1310nm	SC	20km	Ex.DC48V
OP-ECS33511-40-LFP	10/100/1000M	Bi-di	TX1310/RX1550nm	SC	40km	Ex.DC48V
OP-ECS33711-40-LFP	10/100/1000M	Bi-di	TX1550/RX1310nm	SC	40km	Ex.DC48V

Relative Product

16 Slot Chassis System for Card Type						
OP-F11-220	16 Slot Chassis with double AC220V Power Supply, for Card Type					
OP-F11-48	16 Slot Chassis with double DC48V Power Supply, for Card Type					
OP-ECM53211-2	10/100/1000M	MMF	1310nm	SC	2km	Card
OP-ECS53211-20	10/100/1000M	SMF	1310nm	SC	20km	Card
OP-ECS53511-20	10/100/1000M	Bi-di	TX1310/RX1550nm	SC	20km	Card
OP-ECS53711-20	10/100/1000M	Bi-di	TX1550/RX1310nm	SC	20km	Card
14 Slot Chassis System For Standalone Type						
OP-F12-220	14 Slot Chassis with double AC220V Power Supply, for standalone type					
OP-F12-48	14 Slot Chassis with double DC48V Power Supply, for standalone type					
OP-ECM23211-2	10/100/1000M	MMF	1310nm	SC	2km	Standalone
OP-ECM23211-20	10/100/1000M	SMF	1310nm	SC	20km	Standalone
OP-ECM23511-20	10/100/1000M	Bi-di	TX1310/RX1550nm	SC	20km	Standalone
OP-ECM23711-20	10/100/1000M	Bi-di	TX1550/RX1310nm	SC	20km	Standalone



Contact OPTOSTAR

Shenzhen Optostar Optoelectronics Co., Ltd

Address:A-14,Haide Building,the Intersection of Nanxin Road and Haide Second Road Nanshan District Shenzhen,China .

Tel: +86-755-26400198 +86-755-26400288 Fax: +86-755-26411001

Email: info@optostar.com.cn

Skype:ouyangroya

Web: www.optostar.com.cn